

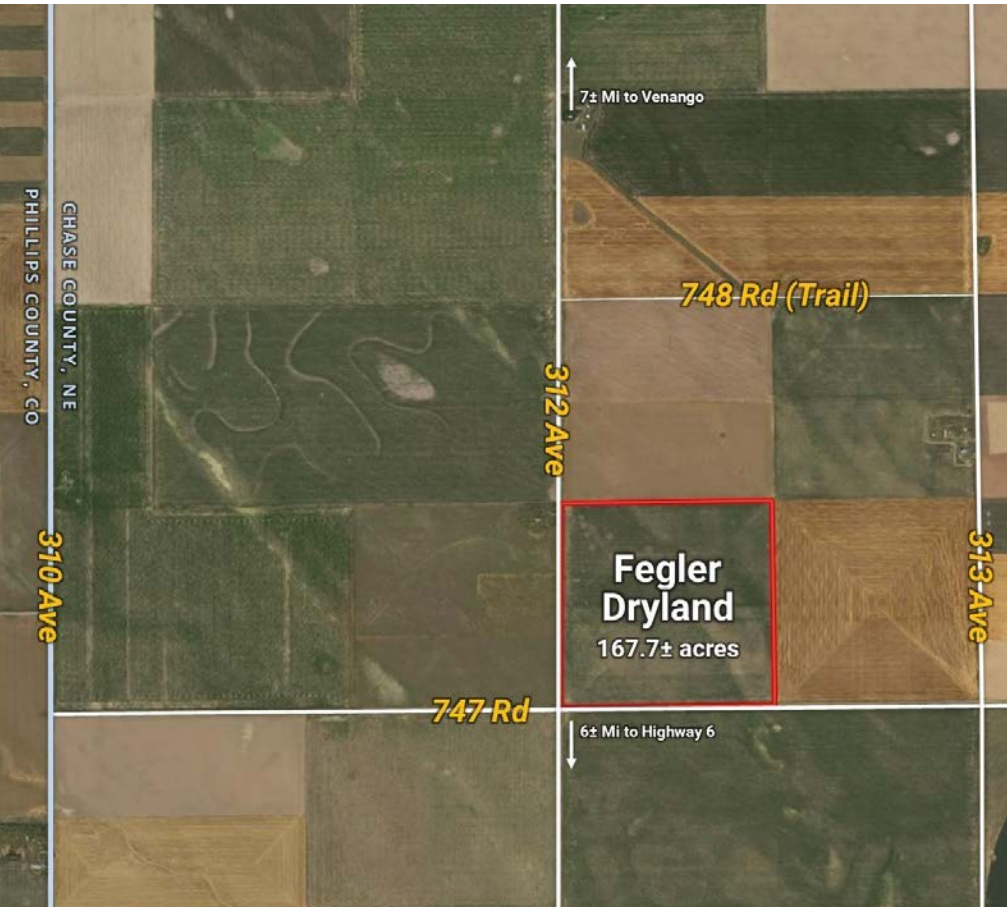
# Fegler Trust Dryland Auction

167.7± ACRES | CHASE COUNTY, NE

Online  
ONLY  
Auction

Wednesday, May 10, 2023

Bidding Opens @ 8 AM, Closes @ 12 PM (noon) MT



**Overview:** Productive quarter-section in western Chase County with 167.3± tillable acres. Located approx. 5± miles north & 2± miles west of Lamar, NE or 7± mi south of Venango, NE. Subject to cash lease for 2023; Buyer(s) to receive cash rental payment.

**R/E Taxes:** \$1,855.04 (2022)

**LEGAL:** SW1/4 Section 18, T8N-R41W

**Starting Bid: \$225,000**

Scan the QR code with your smartphone or visit [reckagri.com](http://reckagri.com) for more info.



All prospective bidders must obtain, and agree to, the full Terms & Conditions of the auction as stated in the **Due Diligence Packet**, which is available upon request and/or at [reckagri.com](http://reckagri.com).



Office: 970.522.7770 | Toll Free: 800.748.2589 | [reckagri.com](http://reckagri.com)



**For More Information, Contact:**

**Ben Gardiner**, Salesperson  
[bgardiner@reckagri.com](mailto:bgardiner@reckagri.com)

**Marc Reck**, Broker  
[marcreck@reckagri.com](mailto:marcreck@reckagri.com)

PO Box 407, Sterling, CO 80751

**ADDRESS SERVICE REQUESTED**

## Reck Means Results

We connect buyers and sellers of ag real estate like no one else can - and we have the reputation and relationships to prove it.

We are also known for getting the job done right. No matter what the situation, you can count on Reck Agri Realty & Auction to bring unmatched attention to detail, extensive market knowledge and a comprehensive strategy to every transaction.



*Mailer is not intended to solicit currently listed properties.  
Reck Agri Realty & Auction is licensed in CO, NE and KS.*

# Fegler Trust Dryland Auction

167.7± Total Acres | 1 Parcel



CHASE COUNTY, NE



**Wednesday, May 10, 2023  
Bidding Opens at 8 AM,  
closing at 12PM (noon) MT**

Online-only auction featuring a productive quarter-section of dryland in western Chase County, NE.

Starting Bid: \$225,000

